

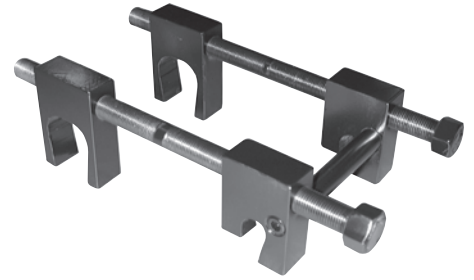
## SPECIAL TOOLS

### 7-8926-Ford Explorer & Mercury Mountaineer Caster/Camber Adjusting Tool

For 2002 & newer models with new design suspension

This tool allows you to slide the upper control arm in a positive or negative direction when adjusting camber/caster while maintaining live alignment reading.

- Heavy duty construction
- Easy installation

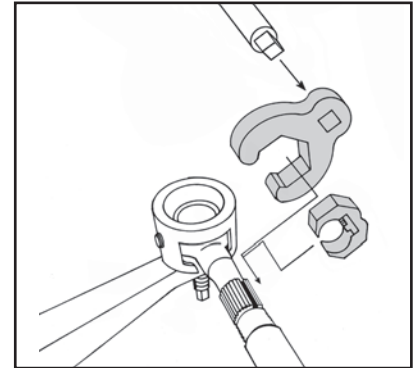


**IMPORTANT:** Prior to checking alignment readings, ride height must be checked and reset if necessary. Refer to shop service manual for proper procedure.

### 7-7200 - Chrysler "LH" Models Toe Adjusting Tool Set

"A Simple Solution to a difficult problem"

This tool set enables the technician to easily reach (and break loose) the tie rod jam nuts while the entire assembly is held stable.



Make and Model	Year	Set Contains
<b>Chrysler:</b> Concord, New Yorker, LHS	1998 - Newer	<b>7-7201</b> Tie Rod Sleeve Adjuster
<b>Dodge:</b> Intrepid	1998 - Newer	<b>7-7102</b> Stabilizer
<b>Eagle:</b> Vision	1998 - Newer	<b>7-7203</b> Adjusting Wrench

### 7-7870 - Taurus/Sable Ball Joint Adapter Set

Make & Model	Year	Make & Model	Year
<b>Ford:</b> Taurus	1996-04	<b>Mercury:</b> Sable	1996-04

#### Description

- Unique Design Easily Removes and Installs Even the Most Stubborn Ball Joints
- Fits Most Popular Model "C" Clamp Style Ball Joint Press Tools



### 7-7880A - Ball Joint Removal & Installation Adapter Set

Unique design easily removes and installs even the most stubborn ball joints.

Fits most popular model "C" clamp style ball joint service tools.

Works with 41-232 Ball Joint (Page TBD)



### 7-7301 - Universal Inner Tie Rod Socket (Between 26mm and 42mm)

- Universal inner tie rod sockets unique design allows fast and easy replacement of inner tie rod end without removing the rack and pinion
- Fits domestic and foreign vehicles with inner tie rods up to 42mm outer diameter
- Adjusts to fit all styles of inner tie rods (round, square, flat or hex) without slipping!



## SPECIAL TOOLS

### 7-8923 - GM "W" Body Rear Toe Adjusting Tool

Allows easy adjustment of factory rear toe system on 1990 and newer Buick Regal, Chevrolet Lumina, Olds Cutlass Supreme, Pontiac Grand Prix, & 1995 Chev Monte Carlo.



### 7-8925 - Heavy Duty Camber Tool

Allows both camber and caster adjustments on 1993 and newer Camaro and Firebird



### Tie Rod Adjusting Tools

**7-7095** Compact Cars - 3/4" Sleeves

**7-7096** Standard Cars - 7/8" Sleeves

**7-7097** Light Trucks - 1 1/8" Sleeves



### Rotary Files

High quality rotary files are ideal for elongating strut holes etc. May be used with 1/4" or 3/8" electric or air drill.

**7-4510** 1/4" Rotary File

**7-4511** 3/8" Rotary File

**7-4512** 5/8" Rotary File

**7-4513** Set of 3



### Taurus/Sable Wagon Rear Toe Tools

These specially designed tools fit the OE rear toe adjusters of all 1986 and newer Taurus/Sable station wagons.

**7-9065** Taurus/Sable station wagons 1986-1995

**7-9066** Taurus/Sable station wagons and Lincoln Continental 1996 - Newer



### Mini Van & SUV's Alignment Wrenches

**7-7414** 13/16" Hex wrench  
Ford Aerostar 1985 - Newer

**7-7534** 22mm Hex wrench  
Astro & Safari 2WD & AWD 1990 - Newer

**7-7829** 21 mm Hex wrench  
Ford Explorer 4x4 1995 & Newer  
Ford F-150 4x4 & 4x2, Expedition 4x4 & 4x2, Navigator 4x4 & 4x2 1997 & Newer  
GM Savana & Express 1997 & Newer



## SPECIAL TOOLS

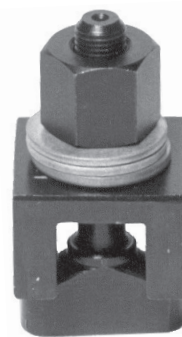
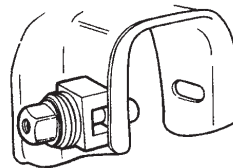
### 7-2288 - GM Truck Upper Control Arm Knock Out Plug Remover

The 7-2288 allows these control arm plugs to be removed without the tool rotating during use!

This New design should be used on

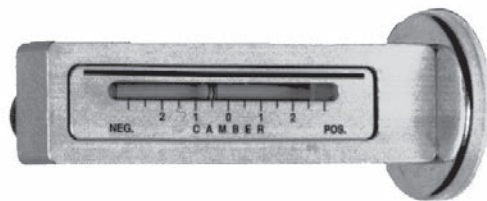
**GM:** 4x4 & 4x2 - 1/2, 3/4, and 1 ton vehicles (1989 & Newer)

**Chevrolet/GMC:** Astro Van and Safari Vans (1989 & Newer)



### 7-2300 - Camber-Kwik Change Gauge!

Every shop should have the Camber-Kwik gauge for fast and easy adjustments. Just snap the magnetic head onto the spindle or rotor for quick camber adjustments up to +/- 3-1/2°

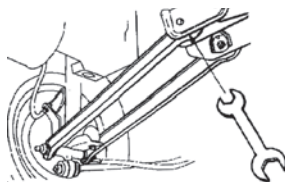


### 7-9200 - Rear Toe Adjusting Tool

For adjustment of rear toe bushings

**Ford/Mercury:**

Taurus/Sable & Tempo/Topaz Sedans  
(1986 & Newer)



### 7-7100 - Front Toe Adjusting Tool Set

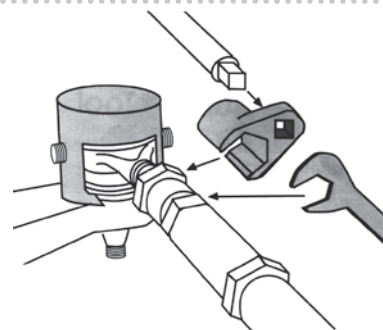
A simple solution to a difficult problem. This tool set enables the technician to easily reach (and break loose) the tie rod jam nuts while the entire assembly is held stable.

**Chrysler:** CHRYSLER "LH" MODELS - Concord & New Yorker LHS (1994-98)

**Dodge:** Intrepid (1994-98)

**Eagle:** Vision (1994-98)

(Kit Includes: Socket, stabilizer & adjusting wrench)

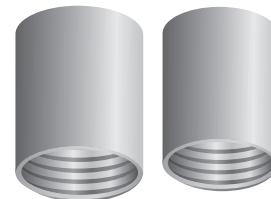
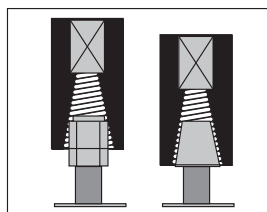


### 7-2400 - Wheel Lug Nut Remover (set)

Passenger & Light Truck

A simple, effective method for removing wheel lug nuts when the key is not available. Also removes damaged lug nuts.

Tapered left-hand threads grip tapered or straight lug nuts



## SPECIAL TOOLS

### 7-6084 - Pitman Arm Adjusting Tool

- Fits 1-7/16" diameter adjusting sleeves
- Permits 360° rotation of pitman arm even where space is limited
- 1/2" square drive for ratchet or breaker bar
- For use on 3/4 and 1 ton trucks, including Ford Super Duty



### 7-6274 - Tie Rod Adjusting Tool

- Fits 1 13/16" diameter adjusting sleeves
- Permits 360° rotation of adjusting sleeve even where space is limited
- 1/2" square drive for ratchet or breaker bar
- For use on 3/4 and 1 ton trucks, including Ford Super Duty



### 7-7085 - Economy CV Boot Banding Tool

This tool works on all FWD vehicles - designed to work with the low profile boot bands



### 7-7800 - Ball Joint Adapter Set Honda/Acura/Cirrus



### 7-343 - Full Contact/Dual Angle Rear Shim Tab Cutting Tool

This cutting tool is designed to easily remove the tabs from our rear wheel full contact/dual angle shims. Removes only those you need removed - Works well on shim series 6000, 6500 and 6700.



### 7-7950A - GM Truck Bushing Adapter Set

This adapter set is designed for easy removal of O.E. control arm bushing and installation of offset camber bushings

**GMC & Chevrolet:** 1/2 & 3/4 ton 4W/D and 2W/D - 2000-05

